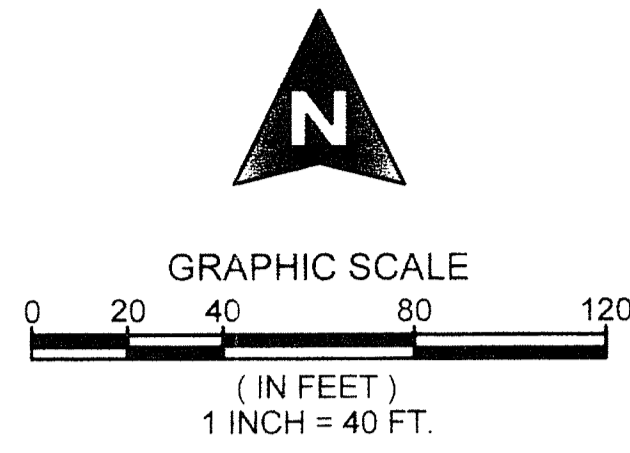


ARDEN P.U.D. POD A EAST AND POD B EAST

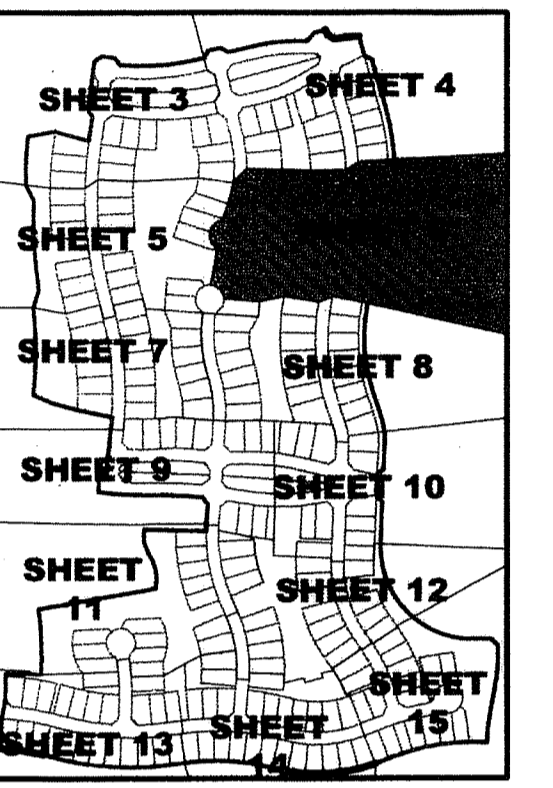
BEING A REPLAT OF A PORTION OF TRACT "FD", ARDEN PLAT 1, AS RECORDED IN PLAT BOOK 122, PAGES 32 THROUGH 51, PUBLIC RECORDS OF PALM BEACH COUNTY, FLORIDA, AND LYING IN SECTIONS, 28 AND 33, TOWNSHIP 43 SOUTH, RANGE 40 EAST, PALM BEACH COUNTY, FLORIDA.



69

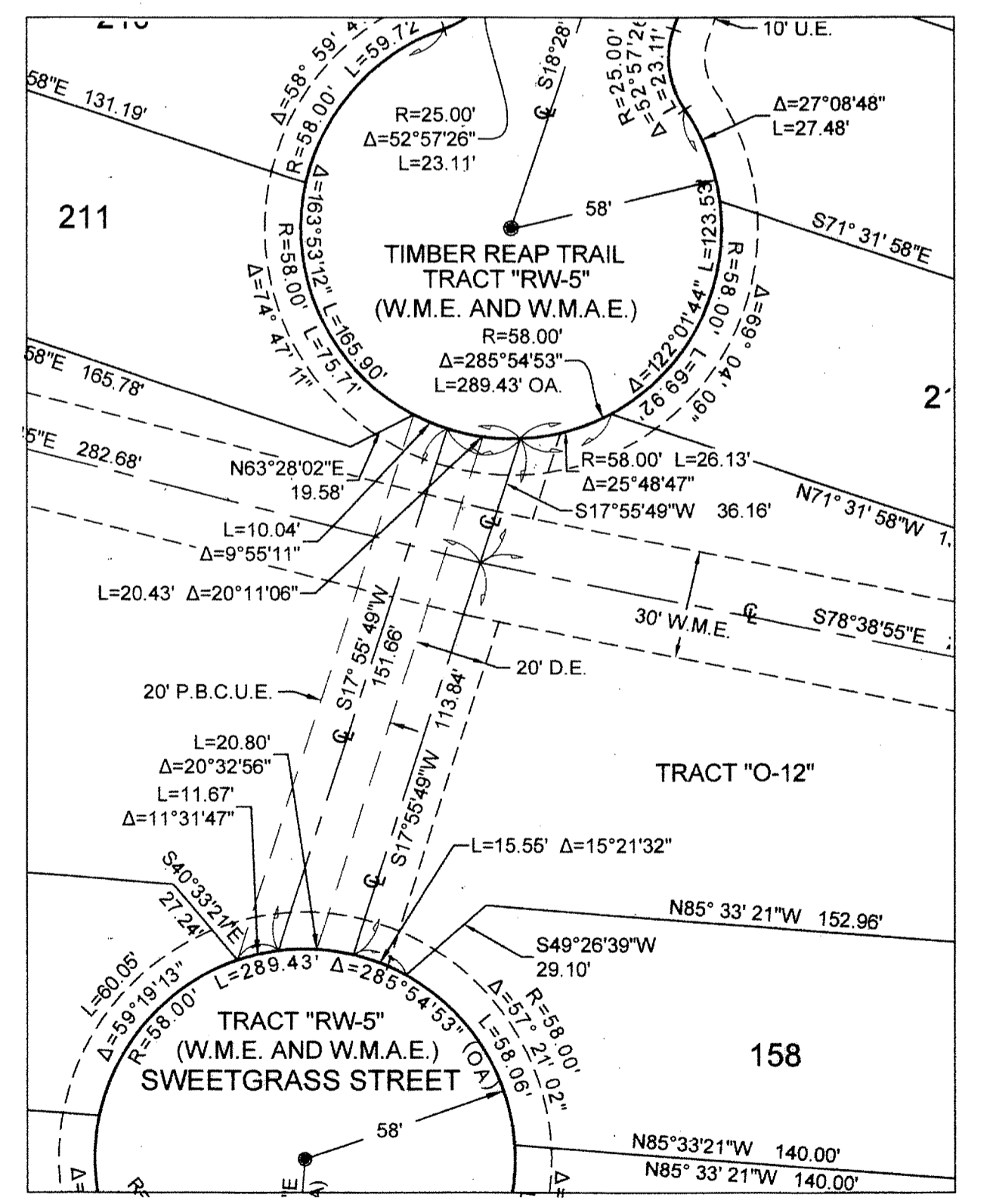
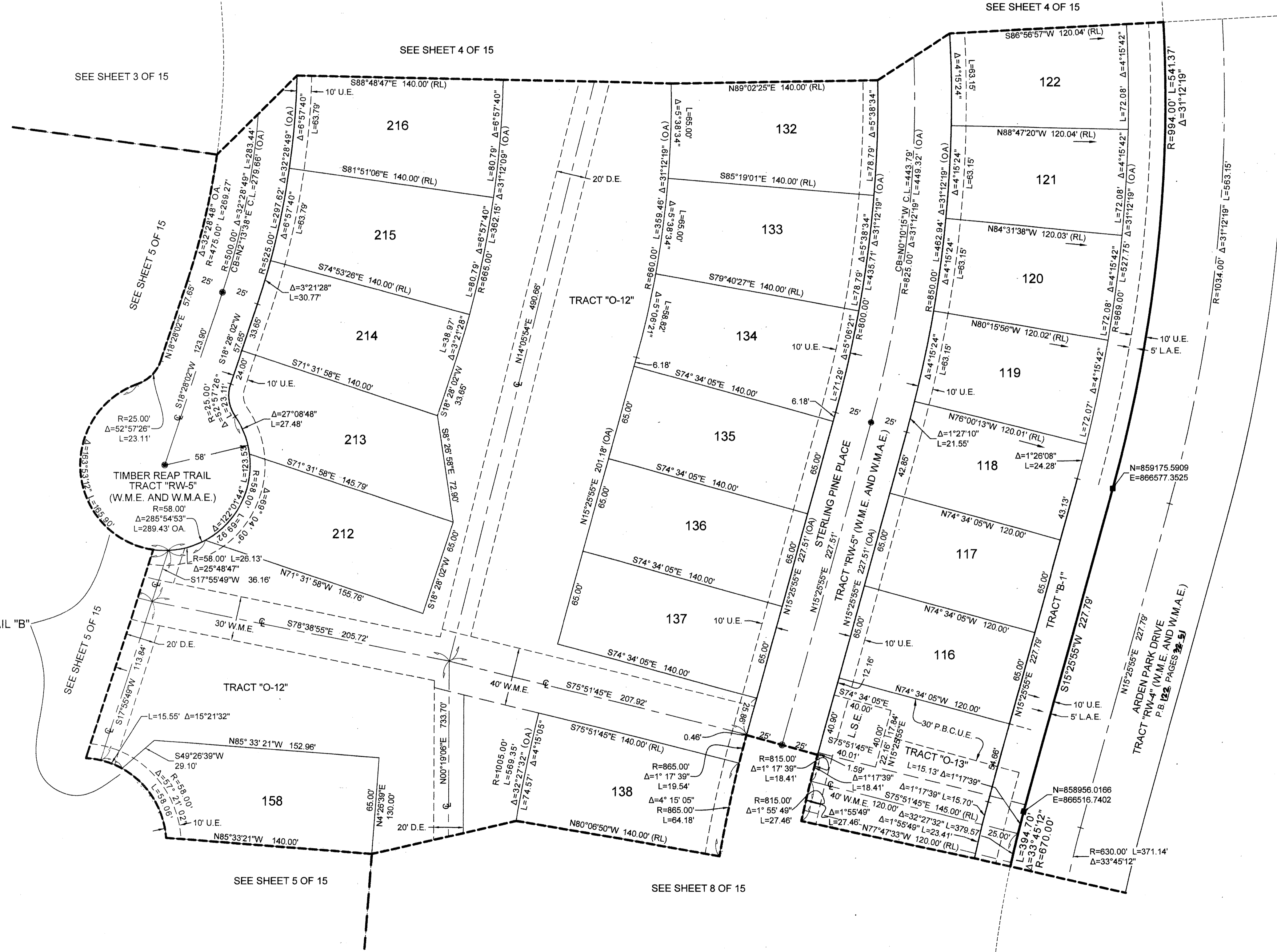
COUNTY OF PALM BEACH)
 STATE OF FLORIDA) SS
 THIS PLAT WAS FILED FOR RECORD AT)
 M. THIS) DAY OF)
 2016, AND DULY)
 RECORDED IN PLAT BOOK NO.)
 ON PAGE) THRU)
 SHARON R. BOCK,
 CLERK AND COMPTROLLER
 BY: _____, D.C.

- LEGEND**
- P.C.P. = PERMANENT CONTROL POINT
 - P.R.M. = PERMANENT REFERENCE MONUMENT
 - O.R.B. = OFFICIAL RECORD BOOK
 - P.B. = PLAT BOOK
 - P.G.S. = PAGES
 - D.B. = DEED BOOK
 - P.B.C. = PALM BEACH COUNTY
 - R.W. = RIGHT OF WAY
 - C.L. = CENTERLINE
 - U.E. = UTILITY EASEMENT
 - D.E. = DRAINAGE EASEMENT
 - R. = RADIUS
 - L. = ARC LENGTH
 - Δ = CURVE CENTRAL ANGLE
 - P.O.B. = POINT OF BEGINNING
 - P.O.C. = POINT OF COMMENCEMENT
 - = DENOTES SET NAIL DISK AS SHOWN
 - = DENOTES SET 1/2" IRON ROD WITH CAP STAMPED MB&A L.B. 2438
 - ⊙ = DENOTES SET NAIL DISK AS SHOWN
 - ⊙ = DENOTES SET NAIL DISK AS SHOWN
 - ⊙ = DENOTES FOUND P.R.M. AS SHOWN
 - ⊙ = DENOTES FOUND P.R.M. AS SHOWN
 - ⊙ = CHORD LENGTH
 - ⊙ = CHORD BEARING
 - ⊙ = TYPICAL
 - ⊙ = SEWER EASEMENT
 - ⊙ = WATER EASEMENT
 - ⊙ = LANDSCAPE BUFFER EASEMENT
 - ⊙ = LIMITED ACCESS EASEMENT
 - ⊙ = FOUND
 - ⊙ = OVERALL
 - ⊙ = CONCRETE MONUMENT
 - ⊙ = FLORIDA POWER AND LIGHT

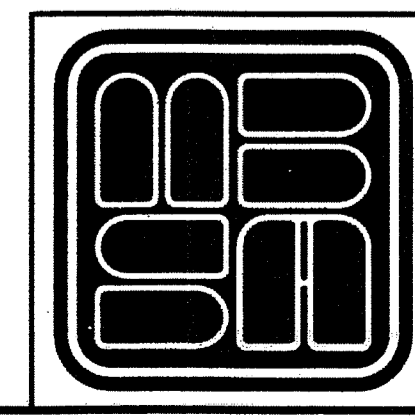


KEY MAP NOT TO SCALE

ARDEN PLAT 1 (P.B. 122, PAGES 32-51)



DETAIL "B" SCALE: 1" = 40'



MICHAEL B. SCHORAH & ASSOCIATES, INC.
 1850 FOREST HILL BLVD., SUITE 206
 WEST PALM BEACH, FLORIDA 33406
 EB# 2438 TEL. (561) 968-0080 FAX. (561) 642-9726 LB# 2438